



martin

INTERNATIONAL ENCLOSURES

PRODUCT CATALOG

Racks | Enclosures | Power | Cooling



CUSTOM is the new STANDARD

Martin Enclosures has been designing and manufacturing server racks, enclosures, power, and cooling solutions since 1998. We specialize in high-quality off-the-shelf, modified standard, and fully custom rack mount enclosures, server racks, and cabinets for a wide range of applications.

Data center and facilities managers with unique requirements trust Martin Enclosures to deliver non-standard and custom equipment tailored to their specific needs. Unlike suppliers that only offer pre-made stock products, we design and build custom solutions—including racks, enclosures, power systems, and cooling units—to meet each customer's exact specifications.

Our philosophy is rooted in continuous improvement, manufacturing excellence, and an unwavering commitment to customer satisfaction. We use only the highest quality materials and take pride in crafting every product that bears the Martin name.



Martin Enclosures Product Catalog

Table of Contents

Server Racks and Cabinets

Open-Frame Server Racks 5-7

MSR-Series Server Cabinet 8-9

MET-Series Network Cabinet 10-11

MHD-Series High Density Cabinet 12-13

MZ4-Series Seismic Cabinet 14-15

Two-Post Seismic Racks 16

Shock and Vibration Isolation Racks 17

MSV-Series Slide Out Racks 18

EMI/RFI Shielded Enclosures 19

Colocation Server Cabinets 20

Double Wide Server Cabinets 21

Wall Mount Racks 22

Table Top Racks 23

SoundVault SV1 Cabinet 24

Fiber Frame Racks 25

OEM Enclosures 26

Custom Server Rack Solutions 27

Power Management Solutions

Basic Vertical PDUs 30

Basic Rack Mount PDUs 31

Martin Dynamic PDUs 32-35

Power Distribution Enclosures (PDE) 36-37

Power Accessories 38

Thermal Management Solutions

Air Conditioned Enclosures 40-41

Cooling Accessories 42-43

Cable Management

Cable Management Solutions 45-46

Rack Accessories and Optional Features

Doors, Handles, Side Panels, Top Panels, Shelves/Drawers, and Rack Accessories 48-55

Martin Services and Facility..... 56-61

Performance. Versatility. Quality.



Martin Enclosures designs and manufactures high-performance server racks, enclosures, power, and cooling solutions for a wide range of industries. Our core markets include Data Center, IT & Networking, Telecommunications, Broadcast/AV, Medical, and OEM.

In response to the evolving demands of the IT industry, Martin develops versatile rack solutions engineered for performance and adaptability. Our racks and enclosures provide a flexible platform for mounting equipment and accessories, ensuring long-term value and ease of integration.

We offer standard, modified standard, and fully custom solutions to fit your exact requirements. Whether it's for a complex enterprise installation or a unique OEM application, Martin Enclosures is committed to delivering the highest quality and most advanced features.

Our server racks and enclosures safeguard your critical equipment, providing security, scalability, and durability. As the foundation of your IT infrastructure, choosing the right rack is essential for supporting growth. Martin Enclosures delivers industry-leading versatility, backed by unmatched product quality and superior customer service.

Open Frame Server Racks

Martin's signature patented frame is a rugged unique design constructed out of our aluminum extrusion. The frame design was engineered to be versatile for a wide variety of applications, allowing the customer to choose virtually any size. The frame features fully welded aluminum extrusion to ensure the support of your critical equipment. Our signature frame is the foundation for many of our racks and enclosures including the MSR-Series, MET-Series, MHD-Series, MZ4-Series, Power Distribution Enclosures (PDE), and many more.

What Size Rack is Right for You?

For optimal results, select a server rack with enough internal space to house your servers as well as other accessories. For example, you want to make sure you leave room for power management devices, cable management, and environmental monitoring devices. If you are planning on expanding your setup in the future, ensure there will be enough space to contain additional equipment. Rack mount equipment is measured in "Rack Units". One rack unit is equal to 1.75" height. Standard cabinets are 42 rack units, or 42U. Be sure that the rack will fit in the space given.

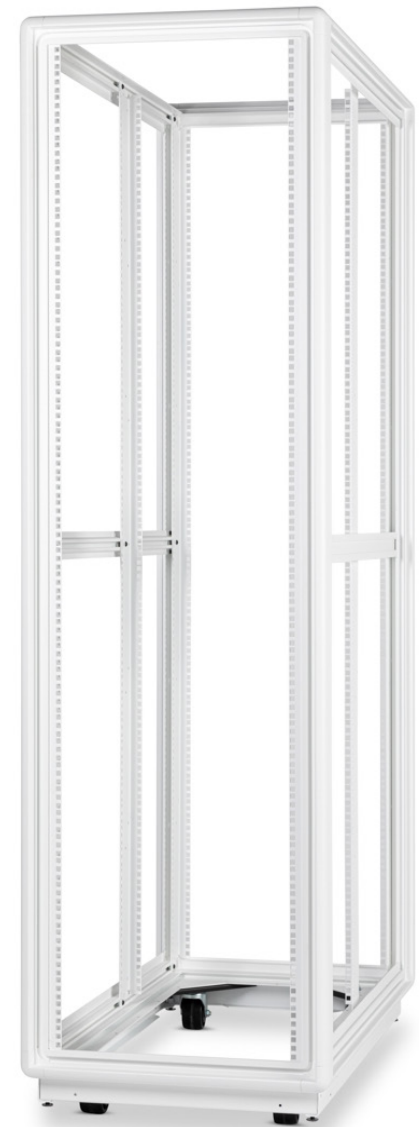
Features

3 Pairs of Fully Adjustable Vertical Mounting Rails

- 19", 23", 24" and 28" Rack mount available
- Standard square hole mounting
- Optional round .281 hole mounting and tapped 10-32 and 12-24 mounting

Fully Welded Patented Aluminum Extrusion Frame

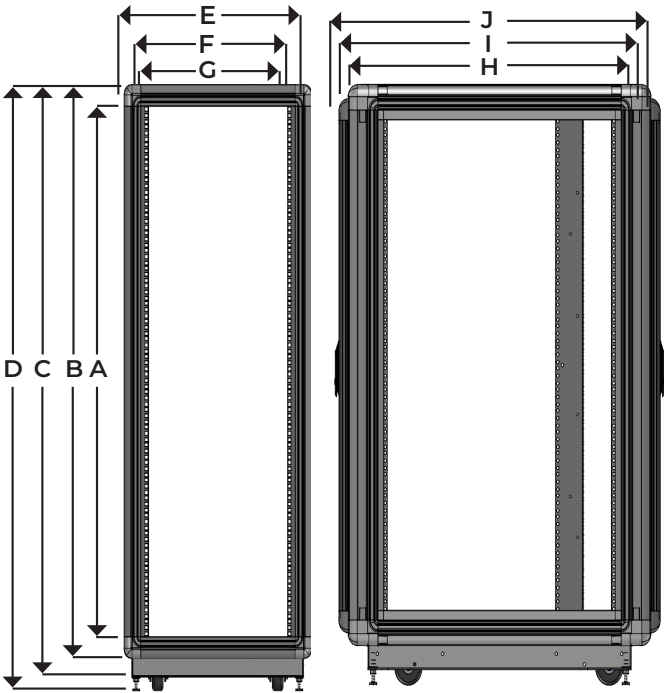
- Lightweight 6063 T5 welded rugged frame
- Dynamic weight load 2,000 lbs; Static weight load 3,000 lbs
- HD Capacity options available
- Available in many standard heights, widths, and depths
- **Heights available up to 60U+ and depths up to 58"**
- Heavy duty caster base with adjustable levelers
- Textured powder coat finish
- US patent # 6,179,398



Standard Rack Sizing Chart



STANDARD ALUMINUM FRAME DIMENSIONS										
Nominal Height		24.5"	35"	42"	52.5"	61.25"	70"	73"	77"	84"
A	Inside Usable	24.59	35.09	42.09	52.59	61.34	70.09	73.59	77.09	84.09
B	Outside Frame	28.83	39.33	46.33	56.83	65.58	74.33	77.83	81.33	88.33
C	Frame Height with Base	30.79	41.29	48.29	58.79	67.54	76.29	79.79	83.29	90.29
D	Frame with Casters	32.08	42.58	49.58	60.08	68.83	77.58	81.08	84.58	91.59
Nominal Width		19"	20"	23"	24"	28"				
E	Inside Rack Width	19.09	19.76	24.09	24.09	28.09				
F	Outside Frame	23.33	24.00	28.33	28.33	32.33				
G	Hole to Hole Mtg w/std rail	18.31	18.31	22.31	23.31	27.31				
Depth		24"	30"	36"	42"					
H	Rail to Rail	24.00	30.00	36.00	42.00					
I	Overall Frame	26.42	32.42	38.42	44.42					
J	Overall with 2 Extruded Doors	28.67	34.67	40.67	46.67					



Standard Rack Variations & Options

Rack Base Options



STANDARD CASTER BASE

e.g Frame Part # 732030-L



BOLT DOWN BASE

e.g Frame Part # 732030-LBB

STANDARD ALUMINUM FRAME SIZES											
RACK WIDTH	Rack Height 19" Width	24.5" 14U	35" 20U	42" 24U	52.5" 30U	61.25" 35U	70" 40U	73" 42U	77" 44U	84" 48U	
	24" Deep	241924	351924	421924	521924	611924	701924	731924	771924	841924	Standard 19" EIA Rack Mounting Width
	30" Deep	241930	351930	421930	521930	611930	701930	731930	771930	841930	
	36" Deep	241936	351936	421936	521936	611936	701936	731936	771936	841936	
	42" Deep	241942	351942	421942	521942	611942	701942	731942	771942	841942	
	20" Width	24.5"	35"	42"	52.5"	61.25"	70"	73"	77"	84"	
	24" Deep	242024	352024	422024	522024	612024	702024	732024	772024	842024	Standard 19" Rack Mounting With 24" O.D. Width Footprint
	30" Deep	242030	352030	422030	522030	612030	702030	732030	772030	842030	
	36" Deep	242036	352036	422036	522036	612036	702036	732036	772036	842036	
	42" Deep	242042	352042	422042	522042	612042	702042	732042	772042	842042	
	23" Width	24.5"	35"	42"	52.5"	61.25"	70"	73"	77"	84"	
	24" Deep	242324	352324	422324	522324	612324	702324	732324	772324	842324	Standard 23" Telco Mounting Width
	30" Deep	242330	352330	422330	522330	612330	702330	732330	772330	842330	
	36" Deep	242336	352336	422336	522336	612336	702336	732336	772336	842336	
	42" Deep	242342	352342	422342	522342	612342	702342	732342	772342	842342	
	24" Width	24.5"	35"	42"	52.5"	61.25"	70"	73"	77"	84"	
	24" Deep	242424	352424	422424	522424	612424	702424	732424	772424	842424	Standard 24" Communications Rack Mounting Width
	30" Deep	242430	352430	422430	522430	612430	702430	732430	772430	842430	
	36" Deep	242436	352436	422436	522436	612436	702436	732436	772436	842436	
	42" Deep	242442	352442	422442	522442	612442	702442	732442	772442	842442	
	28" Width	24.5"	35"	42"	52.5"	61.25"	70"	73"	77"	84"	
	24" Deep	242824	352824	422824	521924	612824	702824	732824	772824	842824	19", 23", or 24" Rack Mounting in Extra Width Unit
	30" Deep	242830	352830	422830	522830	612830	702830	732830	772830	842830	
	36" Deep	242836	352836	422836	522836	612836	702836	732836	772836	842836	
	42" Deep	242842	352842	422842	522842	612842	702842	732842	772842	842842	

Vertical Rail Mounting Options

Tapped 10-32 & 12-24 Mounting Holes

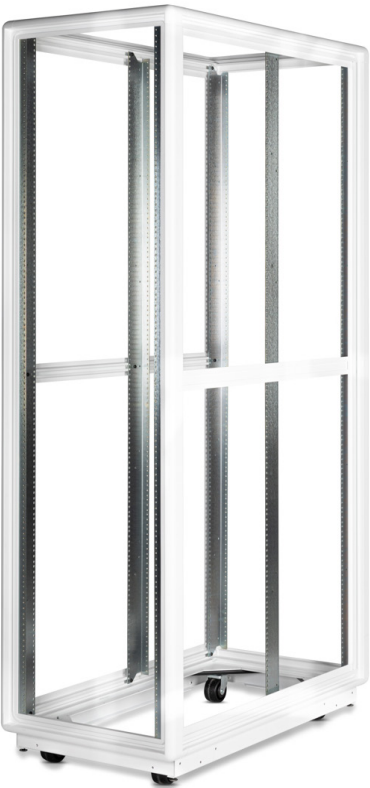
- Rails can be tapped either 10-32 or 12-24 for easy mounting
- All tapped rails are plated in clear zinc
- e.g. Part # 732030-TR10 (10-32), 732030-TR12 (12-24)

Reducer Vertical Mounting Rails

- Rack frames that feature 24" and 28" ID widths have the option of reducing the rack mount area to 19"
- Provides additional room for cable management and improves airflow
- e.g. Part # 732430-RR19

2 Pair of Standard Square Hole Mounting Rails

- e.g. Part Number 732030-2L



MSR-Series Server Cabinet

Engineered to support the demands of modern infrastructure, the MSR-Series Server Cabinet is a robust, deployment-ready solution designed for AI workloads, data centers, IT operations, and high-density networking environments.

Built using Martin’s patented aluminum-extruded frame technology, the MSR-Series offers exceptional structural strength while maintaining a clean, professional appearance. This advanced design provides the durable foundation required for scalable, long-term infrastructure growth.

Features

Welded Patented Aluminum Extrusion Frame

- Lightweight 6063 T5 welded rugged frame
- Dynamic weight load 2,000 LBS; Static weight load 3,000 LBS
- HD capacity options available
- 24" Overall frame width to fit on data center floor tiles
- Available in 24U, 40U, 42U, 44U, 48U, 52U height options
- 36", 42", 45" depths available
- Custom sizes available upon request
- Textured powder coat finish

2 Pairs of Fully Adjustable Vertical Mounting Rails

- 19" Rack mount
- Standard square hole mounting
- U-Labels markings

Solid Top Panel With Cable Access

- (2) 12" X 4" cable access cutouts with cover plates

Caster Base

- 3" Casters and adjustable leveling feet

Perforated Front and Rear Lockable Doors

- 63% Ventilation for airflow

Externally Removable Side Panels

- Bolt on solid side panels

(2) Lacing Panels

- Mounting up to (4) vertical PDUs or a wide variety of cable management accessories



Part Number	Dimensions				Frame Style	
	19" Rack Mount	Usable Width	Usable Height (U)	Usable Depth	Patented Aluminum Frame	Welded Frame
MSR422036	√	19.76"	24U	36"	√	√
MSR422042	√	19.76"	24U	42"	√	√
MSR422045	√	19.76"	24U	45.58"	√	√
MSR702036	√	19.76"	40U	36"	√	√
MSR702042	√	19.76"	40U	42"	√	√
MSR702045	√	19.76"	40U	45.58"	√	√
MSR732036	√	19.76"	42U	36"	√	√
MSR732042	√	19.76"	42U	42"	√	√
MSR732045	√	19.76"	42U	45.58"	√	√
MSR772036	√	19.76"	44U	36"	√	√
MSR772042	√	19.76"	44U	42"	√	√
MSR772045	√	19.76"	44U	45.58"	√	√
MSR842036	√	19.76"	48U	36"	√	√
MSR842042	√	19.76"	48U	42"	√	√
MSR842045	√	19.76"	48U	45.58"	√	√
MSR912036	√	19.76"	52U	36"	√	√
MSR912042	√	19.76"	52U	42"	√	√
MSR912045	√	19.76"	52U	45.58"	√	√

* Custom sizes available upon request

MET-Series Network Cabinet

When network infrastructure demands more space, more flexibility, and more control, the MET-Series Network Cabinet delivers. Engineered specifically for high-density cabling environments, this wider profile cabinet transforms cable management from a challenge into a competitive advantage.

The expanded width design provides generous working room beyond standard server cabinets, giving network administrators the space they need to organize, route, and maintain complex cabling infrastructures efficiently. Integrated 19" reducer rails feature strategic cable pass-throughs that adapt seamlessly to diverse network configurations, from traditional networking runs to modern fiber deployments.

Features

Welded Patented Aluminum Extrusion Frame

- Lightweight 6063 T5 welded rugged frame
- Dynamic weight load 2,000 LBS; Static weight load 3,000 LBS
- HD Capacity options available
- 28.33" and 32.33" Overall frame widths available
- Available in 24U, 40U, 42U, 44U, 48U, 52U height options
- 36", 42", 45" depths available
- Custom sizes available upon request
- Textured powder coat finish

2 Pairs of Fully Adjustable Vertical Mounting Rails

- 19" Rack mount
- Cable pass throughs with cover plates on vertical rails
- Standard square hole mounting
- U-Label markings

Solid Top Panel With Cable Access

- (2) 12" X 4" and (2) 24" X 4" cable access cutouts with cover plates

Caster Base

- 3" Casters and adjustable leveling feet

Perforated Front and Rear Lockable Doors

- 63% Ventilation for airflow

Externally Removable Side Panels

- Bolt on solid side panels

(2) Lacing Panels

- Mounting up to (4) vertical PDUs or a wide variety of cable management accessories



Part Number	Dimensions				Frame Style	
	19" Rack Mount	Usable Width	Usable Height (U)	Usable Depth	Patented Aluminum Frame	Welded Frame
MET422X36	√	24.09"or 28.09	24U	36"	√	√
MET422X42	√	24.09"or 28.09	24U	42"	√	√
MET422X45	√	24.09"or 28.09	24U	45.58"	√	√
MET702X36	√	24.09"or 28.09	40U	36"	√	√
MET702X42	√	24.09"or 28.09	40U	42"	√	√
MET702X45	√	24.09"or 28.09	40U	45.58"	√	√
MET732X36	√	24.09"or 28.09	42U	36"	√	√
MET732X42	√	24.09"or 28.09	42U	42"	√	√
MET732X45	√	24.09"or 28.09	42U	45.58"	√	√
MET772X36	√	24.09"or 28.09	44U	36"	√	√
MET772X42	√	24.09"or 28.09	44U	42"	√	√
MET772X45	√	24.09"or 28.09	44U	45.58"	√	√
MET842X36	√	24.09"or 28.09	48U	36"	√	√
MET842X42	√	24.09"or 28.09	48U	42"	√	√
MET842X45	√	24.09"or 28.09	48U	45.58"	√	√
MET912X36	√	24.09"or 28.09	52U	36"	√	√
MET912X42	√	24.09"or 28.09	52U	42"	√	√
MET912X45	√	24.09"or 28.09	52U	45.58"	√	√

* Replace the "X" with "4" for 28.33" Overall Width or "8" for 32.33" Overall Width (EX: MET732442)

* Custom sizes available upon request

MHD-Series High Density Server Cabinet

As AI transforms data center architecture, traditional cabinets can no longer support the weight, cooling, and spatial demands of modern GPU-driven systems. The Martin MHD-Series High Density Server Cabinet is purpose-built for these new requirements—delivering exceptional structural strength, optimized airflow pathways, and intelligent space planning for today’s AI and hyperscale environments.

AI deployments demand more than a standard rack. Dense GPU arrays, liquid-cooling manifolds, redundant power distribution, and massive cable volumes require both unmatched load capacity and strategic internal layout. The MHD-Series High Density Server Cabinet is designed precisely for that.

Features

Welded Patented Aluminum Extrusion Frame

- Lightweight 6063 T5 welded rugged frame
- Dynamic weight load 4,000 LBS; Static weight load 5,000 LBS
- 29.50" (750mm) and 31.50" (850mm) frame widths available
- Available in 42U, 48U, 52U height options
- 50.00" (1270mm) and 60.00" (1524mm) frame depths available
- Custom sizes available upon request
- Textured powder coat finish

2 Pairs of Fully Adjustable Vertical Mounting Rails

- 19" Rack mount
- Cable pass throughs with cover plates on vertical rails
- Standard square hole moun
- U-Label markings

Solid Top Panel With Cable Access

- (2) 12" X 4" and (2) 24" X 4" cable access cutouts with cover plates

Caster Base

- HD Casters and adjustable leveling feet

Perforated Front and Rear Lockable Doors

- High Air Flow 78% Ventilation

Split Quick Release Locking Side Panels

- Solid side panels

(2) Extra Wide Lacing Panels

- Mounting up to (8) vertical PDUs or a wide variety of cable management accessories



Part Number	Dimensions				Frame Style	
	19" Rack Mount	Usable Width	Usable Height (U)	Usable Depth	Patented Aluminum Frame	Welded Frame
MHD732547	√	25.26"	42U	47.58"	√	√
MHD732747	√	27.26"	42U	47.58"	√	√
MHD732557	√	25.26"	42U	57.58"	√	√
MHD732757	√	27.26"	42U	57.58"	√	√
MHD842547	√	25.26"	48U	47.58"	√	√
MHD842747	√	27.26"	48U	47.58"	√	√
MHD842557	√	25.26"	48U	57.58"	√	√
MHD842757	√	27.26"	48U	57.58"	√	√
MHD912547	√	25.26"	52U	47.58"	√	√
MHD912747	√	27.26"	54U	47.58"	√	√
MHD912557	√	25.26"	54U	57.58"	√	√
MHD912757	√	27.26"	54U	57.58"	√	√

* Custom sizes available upon request

MZ4-Series Sesimic Server Cabinets

The MZ4-Series Seismic Server Cabinet is engineered for environments where uninterrupted operation is critical. Certified to Bellcore Telcordia GR-63-CORE Zone 4 standards, it provides proven protection for essential equipment during seismic events that would compromise standard enclosures.

Designed for the most demanding applications—telecommunications networks, emergency response infrastructure, healthcare systems, and mission-critical data centers—the MZ4-Series ensures reliable performance when stability matters most.

Built on Martin's patented aluminum extrusion platform, the MZ4-Series delivers seismic-grade strength while maintaining the clean aesthetics and configurability that define Martin's enclosure designs. Its purpose is not only to withstand earthquakes, but to help maintain operational continuity through them.

Features

Rugged Multi-Functional Steel Welded Frame

- Patented aluminum extruded 6063-T5 welded frame
- 1,000 LB and 1,500 LB Equipment load versions available
- 28.33" Overall frame width
- 38.42", 42.42", and 48.00" Overall depths available
- 24U, 40U, 42U, 44U, 48U Height options
- Rugged bolt down base with 12" X 4" cable entry
- Textured powder coat finish
- Tested and certified to Bellcore Telcordia GR-63-CORE Zone 4 seismic requirements with up to 1,500 lbs of installed equipment
- Custom Sizes and Configurations Available Upon Request

2 Pairs of Fully Adjustable Vertical Mounting Rails

- 19" or 23" Rack mount options
- Square hole or 10-32 tapped mounting
- U-Label marking

Perforated Front and Rear Doors with 3-PT Locking

- 63% Ventilation for airflow

Solid Top Panel and Side Panels

- Solid top panel with 12" X 4" cable access cutout in rear with cover plate
- Externally removable bolt on side panels



Part Number	Dimensions				Frame Style		
	19" Rack Mount	Usable Width	Usable Height (U)	Usable Depth	Patented Aluminum Frame	Welded Frame	1,000 Weight Capacity
MZ4422436	√	24.09"	24U	36"	√	√	√
MZ4422442	√	24.09"	24U	42"	√	√	√
MZ4422445	√	24.09"	24U	45.58"	√	√	√
MZ4702436	√	24.09"	40U	36"	√	√	√
MZ4702442	√	24.09"	40U	42"	√	√	√
MZ4702445	√	24.09"	40U	45.58"	√	√	√
MZ4732436	√	24.09"	42U	36"	√	√	√
MZ4732442	√	24.09"	42U	42"	√	√	√
MZ4732445	√	24.09"	42U	45.58"	√	√	√
MZ4772436	√	24.09"	44U	36"	√	√	√
MZ4772442	√	24.09"	44U	42"	√	√	√
MZ4772445	√	24.09"	44U	45.58"	√	√	√
MZ4842436	√	24.09"	48U	36"	√	√	√
MZ4842442	√	24.09"	48U	42"	√	√	√
MZ4842445	√	24.09"	48U	45.58"	√	√	√

* Add "X" to end of part number for 1,500 lb capacity version
 * 23" Rack Mount available for all sizes
 * Custom sizes available upon request

Seismic Two-Post Racks

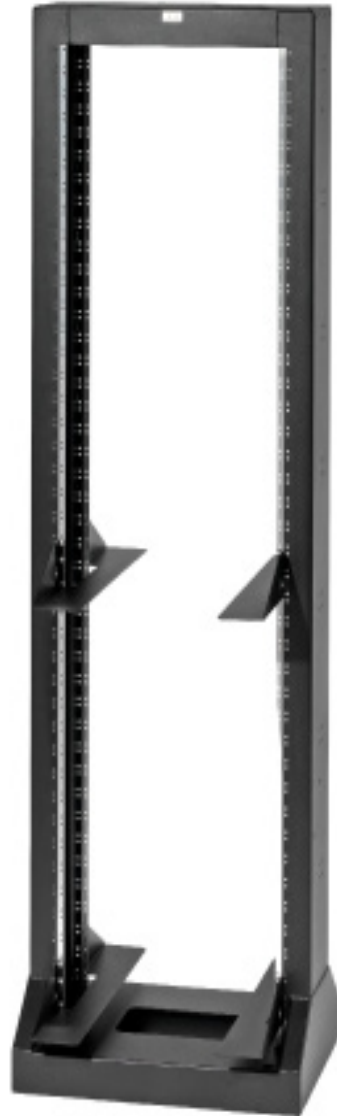
When telecommunications infrastructure must remain operational during seismic events, standard racks aren't sufficient. Martin's NEBS Zone 4 Two Post Seismic Rack provides verified seismic protection for mission critical networking and telecom equipment in the most demanding environments.

Built with fully welded steel, this rack eliminates the vulnerabilities of bolted assemblies and is engineered from the ground up to meet Bellcore NEBS GR-63-CORE Zone 4—the industry's most rigorous seismic standard. Designed for telecommunications providers, emergency services, healthcare facilities, and government agencies, it ensures network reliability when uptime is critical for public safety and disaster response.

Features

Fully Welded Rugged Steel Frame

- Accommodates up to 42U of rack mounted equipment
- 19" and 23" versions available
- Overall dimensions (19" rack mount): 79.75"H X 24"W X 18"D
- Overall dimensions (23" rack mount): 79.75"H X 28"W X 18"D
- 10-32 and 12-24 tapped hole mounting options
- Rugged bolt down base
- Variety of color options
- Includes (50) rack mounting screws
- Tested and certified to Bellcore Telcordia GR-63-CORE Zone 4 seismic requirements with up to 750 lbs of installed equipment
- Textured powder coat finish



Shock and Vibration Isolation Racks

Conventional rack solutions designed for static data centers fail in dynamic environments. Shock, vibration, and motion can damage electronics, corrupt data, and compromise mission readiness. Martin's Shock & Vibration Isolation Racks protect mobile and transportation-mounted equipment from forces that standard racks cannot withstand.

Whether deployed on highways, rails, oceans, or in the air, equipment faces engine vibration, road shock, wave motion, turbulence, and emergency maneuvers. Martin's isolation racks decouple equipment from these destructive forces, preserving functionality and extending service life. Built on Martin's rugged aluminum extrusion platform, they incorporate purpose selected damping systems—coil spring isolators for low-frequency, high-amplitude shock, and elastomeric isolators for higher-frequency vibration—tailored to the specific frequency and amplitude requirements of each application.

Features and Options

- Patented aluminum extruded 6063-T5 welded frame
- Additional welded stiffeners throughout the frame for added support
- Optional coil isolators or elastomeric isolators
- HD Steel floor and wall mounting plates
- Can support load weight of 2,000+ lbs
- Optional floor, wall, or ceiling mounting
- Designed to meet MIL-STD 810G and 901-D options
- Available in all standard Martin frame sizes
- Custom sizes available upon request
- Standard and custom colors available

Please contact Martin for any custom requests at sales@martinenclosures.com or 603.474.2626



MSV-Servies Slide Out Racks

Martin Enclosures introduces the MSV-Series Server Rack. The MSV-Series Server Rack is designed with the ability to pull out from the wall and swivel/rotate. This feature gives customers the ability to pull the rack out and access the rear of the cabinet with ease and limited space requirements. The MSV-Series is a perfect solution for AV and Broadcasting environments.

The MSV-Series Server Rack was developed for applications where space is limited and valuable. The MSV rack weight load is rated at 1,000 lbs. The rack has the ability to rotate 360 degrees with cabling as your only limit. The rack must be bolted to the floor as well as the wall. It is also compatible with most of Martin's rack accessories.

Features

Rugged Multi-Functional Patented Aluminum Frame

- 24" Overall frame width
- Available in a variety of height options
- 24", 30", 36", and 42" overall frame depths
- Textured powder coat finish

2 Pairs of Fully Adjustable Vertical Mounting Rails

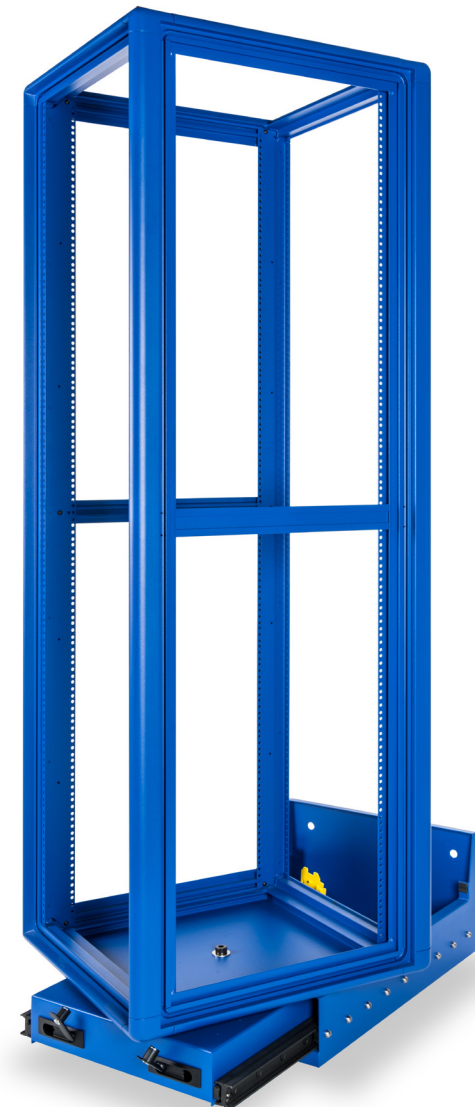
- 19" Rack mount
- Standard square hole mounting

Pull Out and Swivel Base

- 1,000 lb Slides
- Higher HD capacity slides available
- Safety latches to lock in place

Optional Features

- Side panels
- Top panel
- Doors
- Shelves



EMI/RFI Shielded Enclosures

Electromagnetic and radio frequency interference can disrupt equipment, compromise data integrity, and create operational vulnerabilities. Martin's EMI/RFI Shielded Enclosures provide engineered protection, ensuring sensitive equipment operates in a controlled electronic environment.

Martin offers shielded enclosures at two performance levels to match regulatory and operational needs. Standard enclosures meet typical FCC requirements for commercial and industrial applications, while military grade enclosures are engineered to MIL-STD standards, delivering the verified attenuation needed for national security, mission critical operations, and extreme interference environments.

Features

Rugged Multi-Functional Patented Aluminum Frame

- All standard frame sizes available
- All seams on doors and panels are fully welded
- Textured powder coat finish

Available Configurations

- **Commercial FCC** configuration utilizes fabric over foam gasketing and aluminum mesh filters
- **Military Grade** configuration utilizes mesh knitted wire gasketing and honeycomb filters



Colocation Server Cabinets

Colocation Server Cabinets are flexible and innovative cabinets for network, Internet, and application service providers offering their clients complete security and protection of their valuable network equipment in host locations.

Martin Colocation Server Cabinets are the most versatile enclosure racks on the market today with the ability to change from 2 to 3 to 4 bays and back again, with minimal effort.

The Colocation Enclosures are designed for additional security, by separating each customer's equipment and cabling.

Features

Rugged Multi-Functional Patented Aluminum Frame

- Patented aluminum extruded 6063-T5 welded frame
- Available in a variety of heights, widths, and depths
- Dynamic weight load 2,000 lbs; Static weight load 3,000 lbs
- Modified standard sizes, configurations, and colors available
- Textured powder coat finish

3 Pairs of Fully Adjustable Vertical Mounting Rails

- 19" Rack mount
- Standard square hole mounting
- Additional options available

Side Panels and Doors

- Solid, split, and quick release side panels available
- Perforated, Lexan, and solid doors available
- Bays can be keyed differently

Cable Access Top and Bottom Panels

- Special top and bottom panels can accommodate cable access for each bay

Horizontal Security Panel

- Security panel separates bays within the enclosure
- Vented and solid available

Secure Wire & Cable Management

- Cable channels that run to the top or bottom



Double Wide Server Racks

When equipment density exceeds a single rack or interconnected systems require close proximity, Martin's Double Wide Server Racks offer a streamlined solution: two full 19" rack sections within a single, unified cabinet. Built on Martin's proven aluminum extrusion frame, these racks provide the same durability, precision, and reliability found in all Martin enclosures.

More than just two racks side by side, Double Wide Racks are engineered to treat interconnected equipment as a single system. By combining dual sections within one enclosure, they simplify cable management, improve airflow, and provide easier access, eliminating the common challenges of multi-cabinet deployments.

Features

Rugged Multi-Functional Patented Aluminum Frame

- Standard 48" overall frame width (Custom available)
- Available in a variety height and depth options
- Textured powder coat finish
- Modified standard sizes, configurations, and colors available upon request

Fully Adjustable Vertical Mounting Rails

- (2) 19" Rack mount areas
- Standard square hole mounting

Additional Options

- Front and Rear Doors
- Side Panels
- Top Panels
- Vertical Lacing Panel
- Skirted Caster Base
- Top Fans
- Cable Management
- Power Distribution

For Custom Applications Contact Us at
603.474.2626 or sales@martinenclosures.com



Vertical Steel Wall Mount Cabinets

Wall Mount Rack configurations are designed specifically for environments with limited floor space, allowing customers to utilize wall space when full height cabinets are not needed or practical.

Wall Mount Racks come in various configurations including 4U, 6U, and 8U vertical wall mounts. All wall mount racks have 30" of usable depth. They come with two front door options, solid steel and smoked Lexan.

Custom sizes and modified standard configurations are available.

Features

Rugged Multi-Functional Steel Riveted Frame

- 25.25" Overall frame width
- 4U, 6U, and 8U depth options
- 37.50" Height
- Textured black powder coat finish

Pair of Vertical Mounting Rails

- 19" Rack mount
- Standard square hole mounting
- Servers are mounted vertically to save space

Top Access Door

- Solid steel and Lexan option

Cable Access

- (2) 4.5" holes in the bottom for cable access or to add fans



Part Number	Dimensions				Frame Style		
	19" Rack Mount	Overall Width	Usable Height (U)	Usable Depth	Patented Aluminum Frame	Welded Frame	Riveted Steel Frame
VWM-4-30-S	✓	25.25"	4U	30"			✓
VWM-4-30-L	✓	25.25"	4U	30"			✓
VWM-6-30-S	✓	25.25"	6U	30"			✓
VWM-6-30-L	✓	25.25"	6U	30"			✓
VWM-8-30-S	✓	25.25"	8U	30"			✓
VWM-8-30-L	✓	25.25"	8U	30"			✓

Table Top Racks

Martin Table Top Enclosures are server cabinets that provide economical storage for areas limited in space, or when a full server rack is not desired. Table Top Enclosures are ideal for industrial and office environments. All Table Top Racks have 30" of usable depth.

The standard configuration is equipped with vented front and rear doors.

Custom sizes and modified standard configurations are available.

Features

Rugged Multi-Functional Steel Welded Frame

- 23.62" Overall frame width
- 3U, 6U, 9U, 12U, and 15U height options
- 35" Overall frame depth
- Textured powder coat finish

2 Pair of Adjustable Vertical Mounting Rails

- 19" Rack mount
- Standard square hole mounting

Top and Bottom Cable Access in Rear

Front and Rear Locking Doors

- Vented steel and Lexan door options

Additional Options

- Combo locking swing handle
- 105 CFM fan
- Shelves
- Vented Lexan doors
- Casters
- Locking casters



Part Number	Dimensions				Frame Style		
	19" Rack Mount	Overall Width	Usable Height (U)	Usable Depth	Patented Aluminum Frame	Welded Frame	Riveted Steel Frame
TTSC051930-VDNF	✓	23.62"	3U	32"		✓	
TTSC101930-VDNF	✓	23.62"	6U	32"		✓	
TTSC161930-VDNF	✓	23.62"	9U	32"		✓	
TTSC211930-VDNF	✓	23.62"	12U	32"		✓	
TTSC261930-VDNF	✓	23.62"	15U	32"		✓	

SoundVault SV1 Server Cabinet

Turn down your server volume with Martin's SoundVault SV1 Cabinet. The Martin SoundVault SV1 is specifically designed to reduce the noise level of rack mounted equipment in an office or other closed environment. Martin's high performance SoundVault SV1 will give your equipment optimized cooling and dissipate up to 3KW of heat.

The SoundVault is the perfect solution when a dedicated server room is not practical or needed. With a sound reduction of up to 21 dB, it makes even the loudest equipment barely noticeable.

Features

Rugged Multi-Functional Patented Aluminum Frame

- Patented aluminum extruded 6063-T5 welded frame
- Available in a variety of heights, widths, and depths
- Acoustic foam installed on all inside surfaces of cabinet
- Environmental sealing gasket installed on all panels and doors
- Top fan box occupies 2U of rack space
- Dynamic weight load 1,500 LBS; Static weight load 2,500 LBS
- Modified standard sizes, configurations, and colors available upon request
- Textured powder coat finish

2 Pairs of Fully Adjustable Vertical Mounting Rails

- 19" Rack mount
- Standard square hole mounting
- Additional options available

Side Panels and Doors

- Solid side panels
- Front and rear air intake doors
- Front door has temperature display with (2) probes
- Available in F and C

Fan Exhaust Top Panel

- (6) 50 CFM fans installed in top panel
- Optional (4) 200 CFM fans for higher heat loads
- Optional variable speed fan controller
- 115V and 230V versions available.

Bottom Panel with Cable Access

- Bottom panel has a sliding 3X12 cable access door



** High performance models available upon request*

Fiber Frame Racks

Designed specifically to meet the special requirements of fiber cable routing in a standard 19" network management environment.

The fiber frame is available with a standard bolt-down angle base or wire way base for In-Row solutions.

Front fiber management and rear cable management in each of the vertical fiber channels.

Features

2 Post Steel Fiber Frame Rack

- 45U Height
- Standard heavy duty mounting angle base
- Textured powder coat finish

Vertical Mounting Rails

- 19" Rack mount
- Standard square hole mounting

Fiber Channels

- Fiber channels on either side or both sides
- Channels have fiber spools in the front and Velcro saddles for cable management in the rear
- Side-mounted routing channels have full front hinging doors

Additional Options

- Rack mounted cable management solutions
- Cantilever shelves
- Variety of power distribution solutions
- Wire way base for In-Row solutions
- Optional colors to match In-Row equipment
- Variable heights to match adjacent server racks in In-Row solutions



OEM Enclosures

Martin Enclosures offers the expertise and manufacturing capabilities to deliver high-quality, world-class enclosures for virtually any application—on time and within budget.

Our patented aluminum extrusion design provides endless possibilities for custom enclosure sizes, configurations, and complexity. Beyond enclosures, our aluminum extrusion technology is also ideal for creating cost-effective machine frame structures and modules.

Designed for a wide range of OEM applications, Martin Enclosures are perfect for machine and equipment control consoles, R&D testing stations, A.T.E. racks, automation control stations and modules, power supply/switching racks, battery array cabinets, and more. Each enclosure is rugged, aesthetically pleasing, ergonomic, and cost-effective.

We offer off-the-shelf, modified standard, or fully custom enclosures and assemblies to meet your specific requirements.

OEM Options and Capabilities

- Build to print cabinets and enclosures
- Branding and logo options
- Silk screening
- Powder coat color
- Equipment integration
- Private labeling
- OEM packaging
- Drop and blind ship options

Contact Martin to discuss OEM manufacturing capabilities at sales@martinenclosures.com or 603-474-2626



Custom Server Racks and Cabinets

Martin specializes in true custom rack solutions, and that's what sets us apart. When standard rack dimensions don't fit your vision and off-the-shelf products fall short, Martin Enclosures delivers fully customized designs backed by deep engineering expertise.

Every facility has unique demands. Legacy infrastructure, future expansion, unusual equipment layouts, or specialized environmental conditions all require thoughtful design. Martin's engineering team brings extensive technical knowledge to every project, whether you provide complete specifications or need collaborative support from concept through production.

True customization means flexibility in every detail. We manufacture non-standard heights, widths, and depths to exact requirements; design specialized mounting configurations for unique equipment; integrate advanced power, cooling, and cable management; offer custom materials and finishes for demanding environments; and create hybrid enclosures that combine multiple design types into one solution.

To discuss your custom project, call 1-603-474-2626 to speak with a Martin sales engineering specialist. Whether you have detailed drawings or just an idea that needs refinement, we're ready to help you create a solution that fits your exact needs.

Custom Options and Capabilities

- Rack & Enclosure Overall Dimensions
- Silk Screening
- Powder Coat Color
- Customer Equipment Integration
- Shock and Vibration
- Private Labeling
- Cooling Solutions
- Power Solutions
- Cable Management
- Sound Dampening

Please contact Martin for any custom requests at sales@martinenclosures.com or 603.474.2626



Power Management Solutions



Intelligent. Power. Connect.

Dynamic Power Management Solutions

Rack Power Management, like many areas of Information Technology Infrastructure has evolved in recent years and the options available today enable better usability, energy efficiency, and capacity planning.

The rack mounted hardware, application, and incoming power would have a bearing on the Intelligent rack mounted PDU technology levels – whether basic, monitored, metered and outlet switched, or outlet switched with outlet metering.

Martin Enclosures offers cutting-edge rack power solutions for your IT environment, including a comprehensive range of single phase & three phase power distribution units, both basic and Dynamic.

Basic Vertical PDUs

Our custom and standard vertical power strips are designed to perfectly complement our server racks and rack-mounted enclosures, offering the same high quality and flexibility.



Vertical power strips provide efficient power distribution for any equipment enclosure, allowing customers to optimize power consumption with advanced distribution capabilities. These power strips help minimize cable clutter, ensuring a clean and efficient setup while maximizing performance.

Features

- Completely adaptable vertical PDUs can be designed to fit any mounting application
- Input power options include via cord and plug, input receptacle, or hardwire terminal blocks
- Single phase 120V, 208 and 230V, 120/208 3-phase, up to 100A
- Various input and power cord solutions
- Output receptacles can be accommodated including all NEMA straight and twist lock styles, as well as IEC320 C13 and C19, in any combination
- Over-current alarm LEDs
- Standard RMS and “peak” level metering with options for RS232/RS485 interface
- Most power strips are ETL/UL labeled and tested
- Powder coat finish
- Custom configurations and colors available upon request

Additional Options

- Standard and custom configurations
- Custom silk screening
- Color coding

Please contact Martin for any custom requests at sales@martinenclosures.com or 603.474.2626



Basic Rack Mount PDUs

Our rack mount PDUs, available in both standard and custom options, are designed to complement our enclosures, offering the same high quality and flexibility.

Rack mounted PDUs provide tailored and high-performance power distribution to each equipment enclosure. This allows customers to optimize power consumption, reduce cable clutter, and minimize points of failure, ensuring a more efficient and reliable setup.



Features

- Completely adaptable rack mount units and box sizes can be designed to fit any mounting application
- Input power options include via cord and plug, input receptacle, or hardwire terminal blocks
- Single phase 120V, 208 and 230V, 120/208 3-phase, up to 100A
- Various input and power cord solutions
- Output receptacles can be accommodated including all NEMA straight and twist lock styles, as well as IEC320 C13 and C19, in any combination
- Over-current alarm LEDs
- Standard RMS and “peak” level metering with options for RS232/RS485 interface
- Most power strips are ETL/UL cabled and tested

Additional Options

- Standard and custom configurations
- Custom silk screening
- Color coding

Please contact Martin for any custom requests at sales@martinenclosures.com or 603.474.2626

Dynamic Vertical and Rack Mount PDUs

Martin Enclosures Dynamic PDUs offer high-quality rack power monitoring solutions designed to manage power capacity, reduce downtime and energy costs, and enhance overall energy efficiency. Our advanced Rack Power Distribution Units (PDUs) provide cutting-edge technology to meet the demands of today's data centers and IT environments.



Martin's Rack Power Distribution Units (PDUs) are designed to help data center IT managers meet the growing power demands of modern infrastructure. Available in a variety of sizes and configurations, Martin Dynamic PDUs can be customized to suit specific voltage, current, and connection needs, offering the flexibility to address diverse power distribution requirements within the data center.

The MZ series IP PDUs feature dual Gigabit Ethernet LAN IP for redundant network access, while the M series Serial PDUs offer reliable connectivity. Both the MZ and M series PDUs come equipped with newly designed smart meters and patented slide-lock IEC C13 / C19 / Combo C13 / C19 outlets.

Monitored and Switched PDU models are also available, offering comprehensive remote monitoring and the ability to switch outlets on or off from anywhere in the world.



Connection

Secure Auto Lock - Patented IEC outlets with slide lock mechanism - L13 Slide-lock C13 outlets connectable & lockable to C14 plugs using generic IEC cables - L19 Slide-lock C19 outlets connectable & lockable to C20 plugs using generic IEC cables - X19 Slide-lock combo C13 / C19 outlet connectable & lockable to C14 / C20 plugs using generic IEC cables.

Remote Access

High Availability - MZ IP PDU model with embedded dual Gigabit ethernet LAN IP for redundant network access via IP - Enterprise-level IP authentication support e.g., Active Directory (AD), LDAPv3 / LADPS, RADIUS or local credential database.

Metering

Precise Intelligence - MZ & M meters provide real-time local & remote power management - Billing grade meter accuracy within +/- 0.5%.

Linking

Cost Saving Efficiency - Both MZ & M iPDUs provide daisy chain functionality - Via one single Z IP PDU or PDU dongle up to 32 iPDU levels can be accessed via single network IP.

Configuration

Diversified & Customizable - 110V, 208V, 230V, 400V, 415V and more Volt inputs - 1 Phase, 2 Phase & 3 Phase PDU - 10A to 100A Amp inputs - Up to 48 outlets for standard models; Custom outlet configurations available - 0U, 1U & 2U form factor for standard models; Customized chassis size and color available - Wide range of PDU models, including Intelligent, Metered & Basic - C13, C19, US NEMA, UK, Schuko, French, Fused IEC and other outlet selections available - Variety cordset & inlet available - Top or Bottom Feed - Flexible Mounting - all vertical PDUs are supplied with screw button & universal bracket mounting kits - all rackmount PDUs are supplied with horizontal rackmount kits.

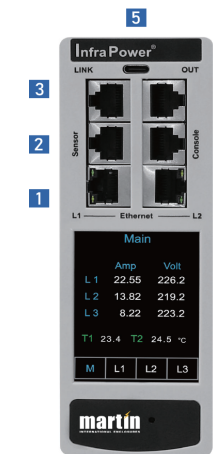


Dynamic PDU Model Overview

Martin Dynamic PDUs are offered in a variety of configurations and functionality.

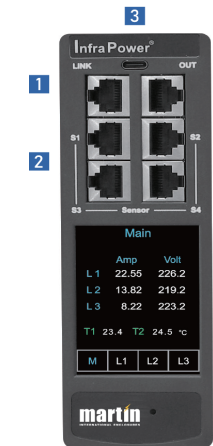
	IP PDU Series				Serial PDU Series			
Part Number	MZ	MZi	MZS	MZSi	M	Mi	MS	MSi
Embedded Dual IP	√	√	√	√				
Strip Power Monitoring	√	√	√	√	√	√	√	√
Circuit Power Monitoring	√	√	√	√	√	√	√	√
Circuit Breaker Monitoring	√	√	√	√	√	√	√	√
Outlet Level Monitoring		√		√		√		√
Outlet Level Switching			√	√			√	√

New Generation Meter



Z IP Meter

- 1 Embedded dual LAN IP
- 2 Sensor port x 1
- support single or daisy chain sensors (up to 4)
- 3 LINK & OUT cascading ports
- up to 32 levels of M / Z meter iPDU
- 4 Console port x 1
- PDU configuration
- 5 USB-C function port x 1
- WIFI
- firmware update
- backup power for meter against PDU power failure
- ✦ The latest Z PDU controller, powered by ARM9 CPU (Microchip AT91SAM9G25)



M Serial Meter

- ✦ IP connection via Z meter PDU or IP dongle
- 1 LINK & OUT cascading ports
- up to 32 levels of M / Z meter iPDU
- 2 Sensor port x 4
- support single or daisy chain sensors
- 3 USB-C function port x 1
- backup power for meter against PDU power failure

2.8" Touchscreen Color Display

The sharp & highly visible display of 2.8" touchscreen LCD provides local data of - Energy Consumption (kWh) - Power (KW) - Power Factor - Current (Amp)- Voltage (V) - Temperature & Humidity

- Energy Consumption (kWh)
- Power (KW)
- Power Factor
- Current (Amp)
- Voltage (V)
- Temperature & Humidity

Billing Grade Meter Accuracy

The +/- 0.5% accuracy of the InfraPower PDU meter is vital for billing accuracy, energy efficiency, capacity planning, and performance monitoring

Hot-swappable Meter Design

Easily replace meter & power module without interrupting critical operations, ensuring maximum uptime and flexibility. Simplify maintenance and minimize downtime with this innovative and user-friendly solution.

Mechanical Design - Outlets

X19 Slide-lock Combo C13 / C19 Outlet

- Patented slide lock design
- Patented hybrid of IEC C13 & C19 outlet design
- X19 outlets provides the flexibility to connect C14 and C20 plugs in the same outlet
- Simplify PDU outlet configuration and provides flexibility to accommodate different power distribution requirements
- Secure C13-C14 and C19-C20 power cords and avoid accidental disconnection
- LED available for Switched PDUs to indicate outlet on / off status

L13 Slide-lock C13 Outlet

- Patented slide lock design
- Built-in slide locking lever automatically lock the C14 plug after insertion
- Secure C13-C14 power cords and avoid accidental disconnection
- LED available for Switched PDUs to indicate outlet on / off status

L19 Slide-lock C19 Outlet

- Patented slide lock design
- Built-in slide locking lever automatically locks the C20 plug after insertion
- Secure C19-C20 power cords and avoid accidental disconnection
- LED available for Switched PDUs to indicate outlet on / off status

Mechanical Design - Chassis

- Slim profile 0U chassis design with only 56mm in width and 55mm/68mm in depth
- Industrial grade chassis supports PDU operating temperature -5° to 60°C
- 8 colored chassis available for primary & redundant (A&B) power feed differentiation



- Slim profile 0U chassis design with only 56mm in width and 55mm/68mm in depth
- Industrial grade chassis supports PDU operating temperature -5° to 60°C
- 8 colored chassis available for primary & redundant (A&B) power feed differentiation



Alternative Outlet

US NEMA, UK BS1363, German Schuko, French, and standard IEC C13 & C19 outlets are available. For project based custom requirements, specific outlets (e.g., Fused IEC, Australian, South African or International) are also available.



Power Distribution Enclosures

Data center managers, facility managers, and design engineers now have a power distribution system available that will reduce circuit costs, increase flexibility, and complement reliability improvements.

Martin Power Distribution Enclosures (PDE) with integrated wire management reduces seal tight cable costs and the need for external raceways. The wire management is located in the lower front and rear of the Power Distribution Enclosures and server cabinets for easy access to power circuits. Additional enclosures can easily be added to an existing row. Traditional bottom or top cable landings serve non-adjacent Martin Enclosures, various brand enclosures and stand alone systems.

The Martin Power Distribution Enclosures with integrated wire management can be installed in raised floor, reduced height floor, and non-raised floor environments.

Features

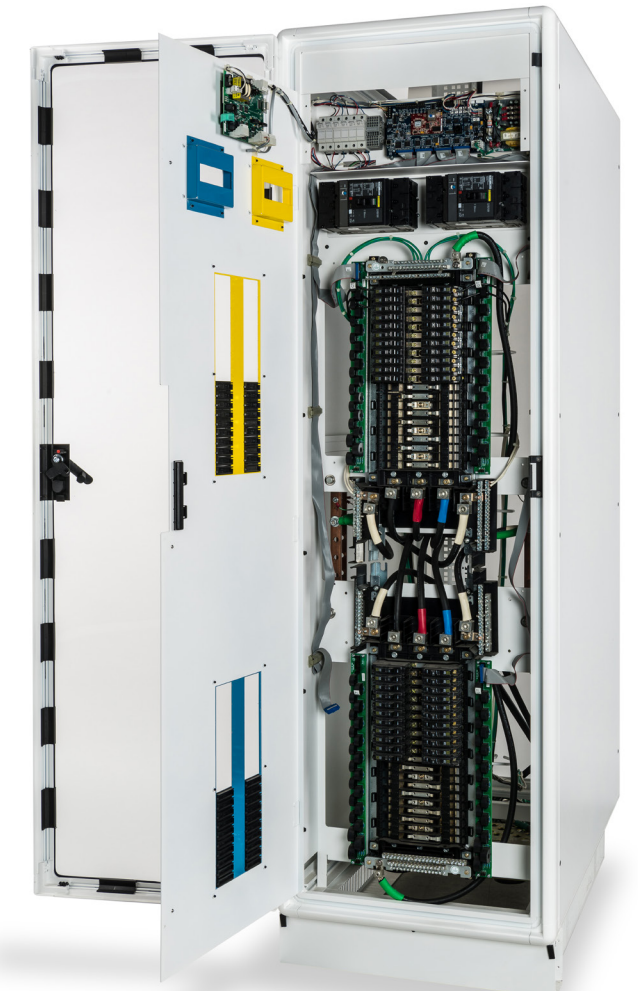
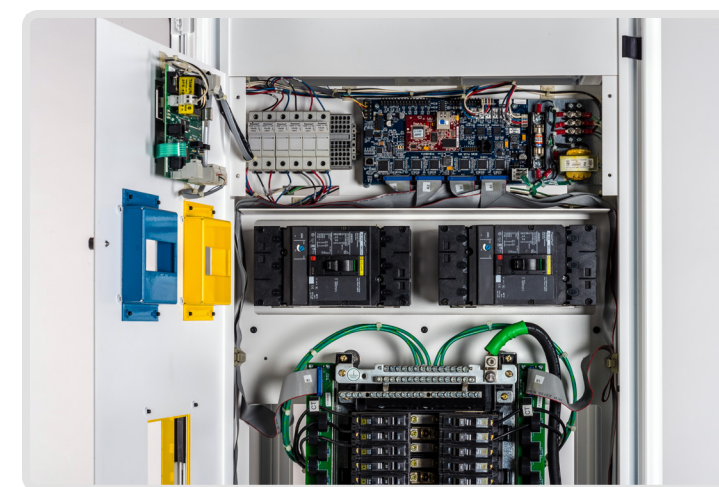
- Patented aluminum extruded 6063-T5 welded frame with steel doors and panels rated at 2,500 lbs with bolt down base
- Designed for In-Row data center applications
- Matches popular Martin enclosures sizes
- Height and depth of PDE can vary to match server cabinets
- Durable powder coat finish
- Delivered assembled and tested
- Locking front and rear doors
- Removable access panels
- 120/280 VAC four wire plus ground input
- Dual input option for dual line cord equipment
- Available in input configurations for
 - 208/120v, WYE 3-phase, up to 400A
 - 400/230v, WYE 3-phase, up to 400A
 - 480v DELTA to 208/120v WYE 3-phase, up to 45 kva
- 84 or 168 breaker positions
- 200% rated neutral
- Universal panel boards
- Integrated wire management
- Easy access cable management in lower front and rear of enclosures



Features Cont.

- Top and/or bottom cable landing
- ETL listed
- Reduces circuit costs
- Reduces the amount of expensive seal tight cables required
- Reduces labor for installing new circuits
- Reduces under floor and overhead cable clutter
- Can expand existing power distribution systems
- Increases cooling airflow under raised floor
- Easier to add server cabinets to existing row
- Can be used in raised floor, reduced height, and non-raised floor applications
- Supports contractor installed receptacles feeding vertical plug strips in server cabinets
- Supports better cable housekeeping
- A single PDE can feed non-adjacent rows with the wire management feature

For Part Numbers Please Contact Us at
sales@martinenclosures.com or 603.474.2626



Additional Features

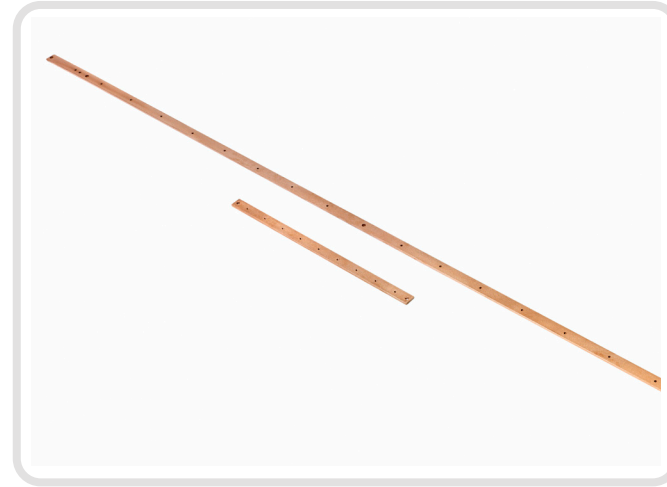
- Custom color, height, width, and depth to match existing enclosures
- Several door options available
- Dual input
- Surge protection device (SPD)
- True RMS current meter with digital display
- Individual branch circuit monitoring (BCM)
- Main breakers
- Factory provided branch breakers
- Top conduit landing
- Multiple enclosure joining kit
- Power cables

Power Accessories

Buss Bars

Buss Bars are provided as a common point of grounding all components and installed equipment in an enclosure.

- Copper buss bars come in horizontal 19", 23", or 24" rack mount versions as well as vertical sizes for each height of the cabinet
- Available in isolated or non isolated types
- Isolated and non isolated styles include ¼" thick and 1" wide copper with 10-32 tapped holes
- Isolated buss bars come with nylon shoulder washers and nylon flat washers to isolate from frame
- Vertical buss bars mount to upper and lower frame member and center stiffener
- Horizontal buss bars mount to vertical mounting rails



Grounding Kits

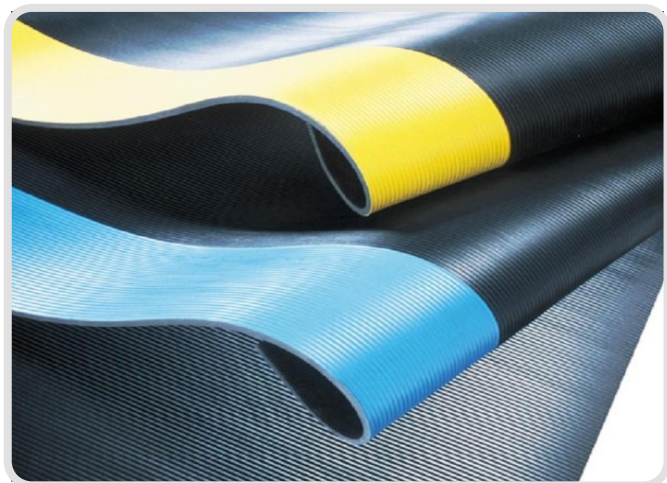
Grounding Kits are available for all Martin enclosures and are installed at time of manufacturing. The grounding kit consists of grounding straps to all exterior panels and doors, plated vertical mounting rails, and a grounding stud in the base.



The frame is free of paint in the areas that need electrical contact from part to part.

Isolation Mats

Isolation mats, commonly known as Switch Board Mats, are used to electrically isolate the enclosure from the data center floor or room floor where the enclosure is installed.



For Part Numbers Please Contact Us at
sales@martinenclosures.com or 603.474.2626

Thermal Management Solutions



Air Conditioned Enclosures

Advanced air conditioned enclosures are specifically designed to completely control internal temperature. Air conditioned enclosures are generally for locations that do not have room air-conditioning or constant air-conditioning.

The Martin Air Conditioned enclosures have an internal closed loop cooling system and the air that is used to cool the condensers is the ambient room air and is exhausted back into the room unless special ducting is set up to exhaust the hot air out of the room.

Features

- Air Conditioned Enclosures are available in side mount, rack mount, and top mounted configurations and are configured in a variety of different Cabinet Heights and Depths
- Rack mounted AC Sizes include 4K BTU (115V or 230V) and 9K BTU (230V)
- Side mounted AC Sizes include 1K BTU, 6K BTU, 8K BTU, 12K BTU (115V or 230V) and 20K BTU (230V)
- Top Mounted AC Sizes include 8K BTU (230V)
- Side mounted Air Conditioners are shipped separately; the Rack and Top Mounted Air Conditioners are shipped fully assembled.
- Earth Friendly Refrigerant
- Mechanical Thermostat located behind the filter on rack mount and Top mount versions and on side of AC unit of Side Mount versions
- LED Temperature Display on Front Door Displaying in 'F' Degrees ('C' Degrees available on special order)
- Ducting Boot Kits available for all Air Conditioner sizes for ducting exhaust air to plenum or other area
- Cleanable, reusable aluminum mesh filter
- Includes Malfunction Switch for use with a variety of customer provided alarms
- Textured powder coat finish
- Multiple color options
- Fully sealed enclosure assembly; closed loop air conditioned cooling
- Square hole mounting rails on standard EIA 310 rack mount pattern for M6 cage nuts
- Patented Aluminum extruded 6063-T5 welded frame with steel doors and panels



	AC Unit Style		Dimensions			Cooling
Part Number	Rack Mount	Side Mount	Usable Height (U)	Rack Height	Usable Depth	Cooling Power
A612036ACRM10K2	√		23U	68.83	36"	9K BTU
A612036-ACSM12K		√	35U	68.83	36"	12K BTU
A612036-ACSM20K		√	35U	68.83	36"	20K BTU
A612042-ACSM12K		√	35U	68.83	42"	12K BTU
A612042-ACSM20K		√	35U	68.83	42"	20K BTU
A702036ACRM10K2	√		28U	77.58	36"	9K BTU
A702036-ACSM12K		√	40U	77.58	36"	12K BTU
A702036-ACSM20K		√	40U	77.58	36"	20K BTU
A702042-ACSM12K		√	40U	77.58	42"	12K BTU
A702042-ACSM20K		√	40U	77.58	42"	20K BTU
A732036ACRM10-1	√		30U	81.08	36"	9K BTU
A732036-ACSM12K		√	42U	81.08	36"	12K BTU
A732036-ACSM20K		√	42U	81.08	36"	20K BTU
A732042-ACSM12K		√	42U	81.08	42"	12K BTU
A732042-ACSM20K		√	42U	81.08	42"	20K BTU
A772036ACRM10-3	√		32U	84.58	36"	9K BTU
A772036-ACSM12K		√	44U	84.58	36"	12K BTU
A772036-ACSM20K		√	44U	84.58	36"	20K BTU
A772042-ACSM12K		√	44U	84.58	42"	12K BTU
A772042-ACSM20K		√	44U	84.58	42"	20K BTU
A842036ACRM10K5	√		36U	91.58	36"	9K BTU
A842036-ACSM12K		√	48U	91.58	36"	12K BTU
A842036-ACSM20K		√	48U	91.58	36"	20K BTU
A842042-ACSM12K		√	48U	91.58	42"	12K BTU
A842042-ACSM20K		√	48U	91.58	42"	20K BTU

* Other standard and custom configurations available upon request

Cooling Accessories

Fan Doors

Fan doors provide an effective cooling solution for excessive heat loads. Fan doors are available in many different configurations and are fully customizable based on your cooling requirements.

- 115V and 230V models available
- Standard fan sizes are 50 CFM, 105 CFM, 300 CFM, and 550 CFM
- Custom fan models available upon request
- Filtered options available

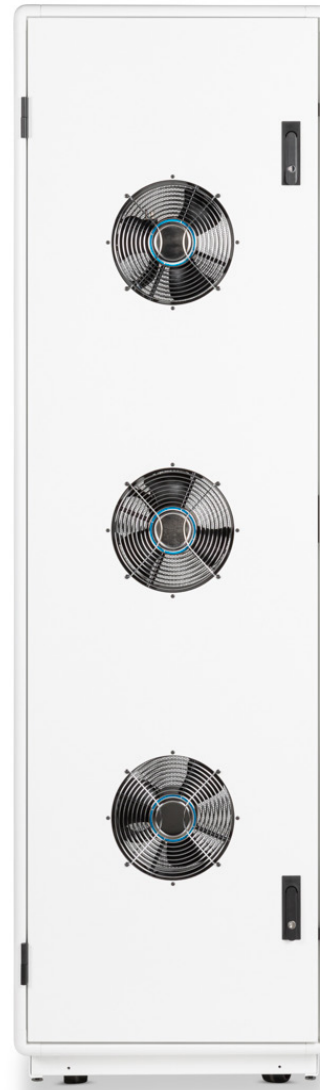
Fan Top Panels

Fan top panels provide an additional cost effective way to cool or assist in cooling an enclosure by exhausting the hot air that rises to the top of the rack keeping equipment cool and not blowing the hot air into an aisle.

Fan top panels come in a wide variety of configurations from 105 CFM to 1605 cfm. They can be configured with (1-9) 105 cfm fans or (1-3) 535 CFM fans. Fan tops can come in either 115V or 230V versions.

- 115V and 230V models available
- Standard fan sizes are 50 CFM, 105 CFM, 300 CFM, and 550 CFM
- Custom fan models available upon request
- Filtered options available

For Part Numbers Please Contact Us at
sales@martinenclosures.com or 603.474.2626



Fan Trays

Fan trays are designed for customers seeking to enhance airflow at the top, middle, or bottom of their racks. Given the high heat loads in today's industry, maintaining proper cooling is crucial to ensure your equipment operates at its best.

- 1U Rack mount form factor
- 115V and 230V models available
- 3-Fan, 6-Fan, 9-Fan, 12-Fan, and 15-Fan models available
- Custom fan models available upon request



Temperature Displays and Thermostats

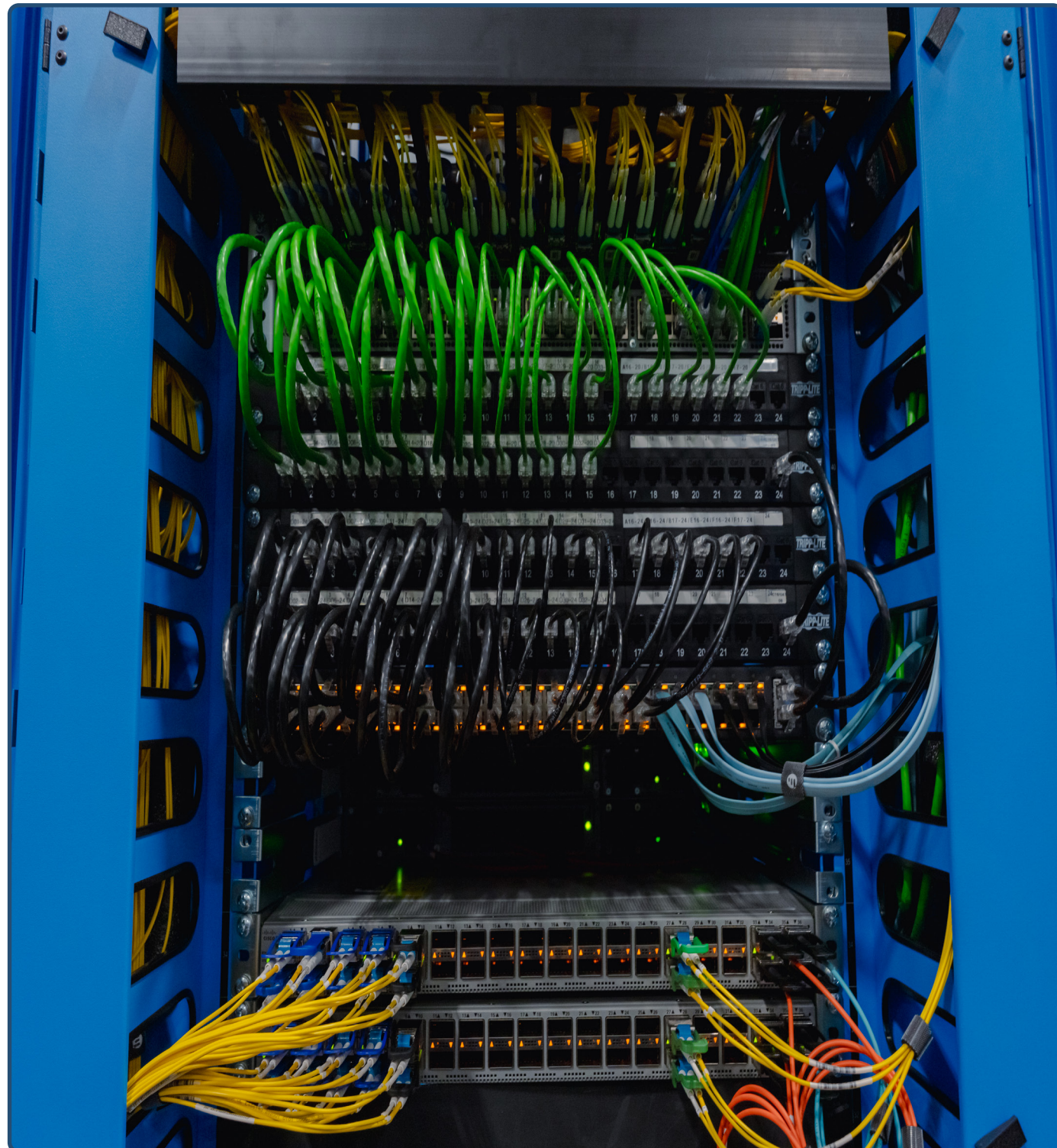
Temperature displays are available upon request and can be integrated in any enclosure to monitor the current temperature.

Temperature displays are available with one or two monitoring probes and run off of either 115V or 230V power. There is also an option for Celcius or Fahrenheit.



Thermostats are intended to mount inside any enclosure that has fans. The thermostats are wired into the circuit of the fans to provide on/off switching to assist in maintaining the desired temperature.

Cable Management



Lacing Panels

Lacing panels give our customers the ability to mount up to (2) PDUs side by side using toolless button mounting on the rear of PDUs. The lacing panel also has a variety of additional mounting holes for cable management. Most of Martin's cable management accessories have the ability to mount to our lacing panels.

Cable Management Rings (CMRs)

Cable management rings (CMRs) make it easy and simple to secure and organize cables within the enclosure. The design configuration allows cables to go into the cable management rings easily and helps to prevent the cables from falling out, providing a neat and clean look for the enclosure cable management.



Velcro Saddles

Velcro Saddles provide an easy and versatile way to organize cables. The saddles are made up of a 8" piece of Velcro that is formed into a loop. The saddles are typically mounted to a Vertical Support Bar (VSB), or can be mounted in numerous other places.



Fiber Rings

Fiber rings are designed to organize and help keep fiber runs from kinking and bending when they are run through the enclosure.



For Part Numbers Please Contact Us at
sales@martinenclosures.com or 603.474.2626

Cable Channels, Wire Ways, and Cable Troughs

Cable channels, cable fingers, and wire ways provide the ability to manage and contain wires and cables within the rack as well as coming to and from the enclosure.

Wire ways can be incorporated in the base as a wire way base to keep power runs out from underneath the raised floor.

Cable troughs can be added on top of the rack and attached to the top panel to allow wires and cables to run directly on top of the enclosure and drop directly into it, instead of on costly ladder racks.

Vertical cable channels and cable fingers can be incorporated inside the rack or on the outside if desired to help keep cables organized and out of the way.

* Vertical cable channel shown below



Features and Options

- Multiple sizes, height, width, and depth
- Configure to customer specifications
- Channel doors or no doors
- Velcro, cable rings, fiber rings, fiber spools can all be added into the troughs or wire ways
- Waterfall entry with radius optional
- Brushed entry optional
- End caps for the end of the row
- Grommeted cutouts optional



* Vertical cable finger shown above

Rack Accessories and Optional Features



Door Options



Aluminum Perforated Door

Aluminum Extruded frame door that has a 63% perforated open area and is used when high ventilation and cooling is required. These doors have a very nice aesthetic appearance with a rounded frame to match the enclosure frame radius.



Vented Steel Door

Vented steel doors have a vent pattern at the top and at the bottom of the door. Each vent pattern has a removable air flow panel to allow you to control where the air enters or exits the enclosure. Vented Doors are a cost effective way to close up and secure a cabinet when minimal ventilation is required.



Lexan Door

Lexan doors are made with an aluminum extruded frame with a radius to match the enclosure for aesthetic appeal. Lexan doors have a smoked polycarbonate resin thermoplastic panel that does not break like acrylic panels do and allows the customer to see the equipment in the enclosure and view the operational lights on the equipment. Clear Lexan is an option as well.



Solid Steel Door

Solid steel doors are the most cost effective way to secure an enclosure when front and rear ventilation is not required.

For secure and ventilated solutions, solid steel doors offer a quality addition to your server rack mount enclosure at a low cost.



Steel Perforated Door

Steel Perforated Doors (SPDs) have a steel frame with a 63% open insert to allow for premium ventilation. 78% open available upon request.

Door Handle Options



Standard Swing Handle

The basic swing handle locking latch requires a key for entry. All standard enclosures are shipped with the 333 key. For colocation facilities, the swing handle locking latch can be outfitted with a different key for each locking latch and if required, and may have a master key for all latches.



Combo Swing Handle

Combination locks do not require a key, only a 3 digit access code to gain entry. Good for colocation facilities where multiple clients use the data center and everyone has access to their own cabinet or bay. The combination locks have a key override for facilities managers to gain access if required.



Padlock Swing Handle

The padlock swing handle locking latch requires a key for entry, but also has the option to add a padlock. The padlock handle has all the same features as the standard handle, but with added security for high traffic areas. Handles are outfitted with the standard 333 key, but can be ordered with different key numbers..



Biometric Swing Handle

A biolock solution represents the cutting edge of what is available in the industry. A fingerprint cabinet lock system can help you protect your data assets with ease.

Fingerprint solutions ensure that a worker always has their keys on hand, making it much easier to adjust authorizations – you only need to change credentials to the lock, you don't need to give users a new key card.

Options for single, dual, and three factor authentication. RFID card, finger print, and keypad entry options available.



Remote Monitored Smart Handle

With increasing number of data breaches and compliance regulations, the Smart Lock will provide your data center with the scalable and granular rack level access control needed to exceed all current industry standards.

Remote monitored smart locks are used to secure and monitor server racks – whether in large data centers or individual data racks. Access control takes place either directly on the handle via PIN code, via transponder card, or centrally, via a management system. The handles are part of an integrated system solution for controlling access.

Side Panel Options



Standard Externally Removable Side Panels

Side panels are used to enclose the cabinets on one or both sides. Standard side panels come externally removable.



Quick Release Side Panels

Quick release side panels require no tools for entry and are available with or without locks.



Internally Removable Side Panels

Internally removable side panels are mounted to the cabinet frame from the inside, which adds an increased level of security as it is not easy to take apart and gain entry from the outside of the server enclosure.

* All side panels are available in a "split" style

Bottom Panels



Bottom Panels come in two styles, Solid and Perforated. The Bottom Panels are available with or without sliding Cable Access doors. The Cable Access Doors allow wires and cables to enter the enclosure from the bottom of the enclosure through the base. The Cable Access Doors come with open cell foam on each side of the opening to close off the area around the cables once the Cable Access Door is closed.

Filler and Cable Access Panels



Filler panels or cable access panels are generally used to fill up rack space where equipment is not mounted in order to keep the cool air in the front of the cabinet from traveling around the equipment that the cool air is intended for.

Top Panel Options



Solid Top Panel

Solid top panels are a basic top that is used when cable access or ventilation through the top of the enclosure is not required.

The solid top panels can also come with two cutouts, grommet, and cover plates for an option of running cables through a solid top.



Fan Top Panel

Fan top panels provide a cost effective way to cool or assist in cooling an enclosure by exhausting the hot air that rises to the top of the rack keeping equipment cool and not blowing the hot air into an aisle.

Fan top panels come in a wide variety of configurations from 105 CFM to 1605 CFM. They can be configured with (1-9) 105 CFM fans or (1-3) 535 CFM fans. Fan tops can come in either 115V or 230V versions.



Brushed Top Panel

Top panels with brushed cable entry cutouts are designed to keep the airflow going in the right direction (front to rear) while allowing fiber, cables, and cords to enter or exit the enclosure.

The nylon brushes also help to keep dust out of the enclosure.

Perforated Top Panel

Perforated top panels are made of 63% open perforated steel material that allows the inside hot air that rises to the top of the enclosure to exit, helping to keep critical equipment cool.

The perforated top panels can also come with two cutouts, grommet, and cover plates to have the option of running cables through the perforated top.



Shelving

Fixed Shelves

Fixed Shelves are used to place equipment on when mounting to the Vertical Mounting Rails (VMRs) is not required, or they are also used to support heavy equipment that is mounted to the VMRs.

They are mounted to the front pair of VMRs and a rear pair of VMRs. Each shelf can be adjusted by 6" to accommodate the different distances between the front pair of VMRs and the rear pair of VMRs.

- Rated at 250 lbs evenly distributed
- Made of 14 gauge steel
- Powder coated Black (BK01)
- Mounting adjustment range front to rear is 6"
- HD options available up to 500 lbs



Sliding Shelves

Sliding Shelves are designed to mount to the front and rear Vertical Mounting Rails and be able to fully extend with a load capacity of 100 lbs making it easy to service, install, or cable equipment.

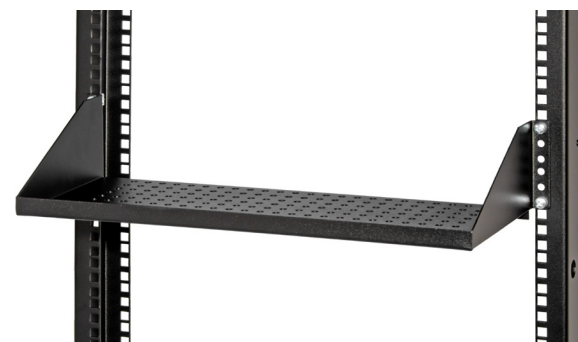
- Rated at 100 lbs fully extended
- HD options up to 500 lbs
- Made of 14 gauge steel
- Powder coated Black (BK01)
- Adjustable mounting brackets for different front to rear rail spacing
- Optional rear cable management arm



Cantilever Shelves

Cantilever Shelves are designed to mount on only one pair of vertical mounting rails typically on a Telco rack or 2-post rack.

They can mount off of the front of the rack or the rear of the rack or both front and rear creating one long shelf by adding (-C) at the end of the part number.



Keyboard Trays and Drawers

Keyboard Trays

Keyboard trays come in three different widths 19", 23", and 24" mounting and four different styles. They all have a light weight cable manager on the rear that can attach to the rear vertical mounting rail or the frame. Options Include swivel keyboard base, slide out mouse pad, and fixed width keyboard tray for smaller keyboards.



Drawers

Utility Drawers come in (3) standard sizes, 3U, 4U, and 5U. The drawers can be supplied for 19", 23", and 24" rack mounting. Utility Drawers are designed to hold items such as documentation, tools, instruments, or laptops. Drawers are mounted on slides for easy access.

- Utility Drawers are 21" deep
- Drawers are mounted on slides for easy access
- Rated at 100 lbs fully extended
- Made of 16 gauge steel
- Extends 20"
- Flush pull handle
- Powder coated
- Drawers can be supplied with a lock
- Lockable tops can be added
- Cable Management arms are available for the rear of the drawer
- Customization upon request



Rack Accessories

Angle Brackets (Support Rails)

Angle Brackets are used to support equipment using the minimal amount of rack space which allows the customer to maximize the rack space in an enclosure.

- Made of 12 gauge steel
- Front to rear mounting is adjustable by 6" to allow vertical mounting rails to be placed in various positions
- Uses minimal rack space
- Allows for vertical air flow
- 200 lb load rating
- Caution is to be exercised when loading equipment onto angle brackets to assure equipment does not slip between angle brackets since angle brackets do not span the entire width of the rack area



Floor Mount Brackets

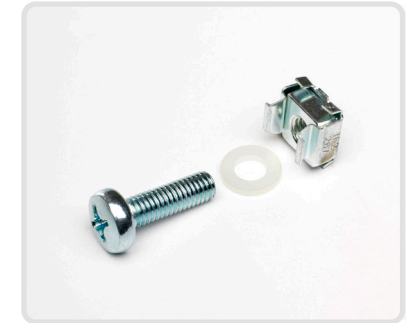
Floor mount brackets are a great option to properly secure your rack or cabinet to the floor. Whether you are worried about seismic activity, have a heavy rack load, top heavy rack, or side mount equipment it is always a safe idea to secure your rack or cabinet to the floor. Standard floor mount brackets attach to the front and rear of the caster base, but can be optioned on the side as well for added support.

U-Labels

U-labels are available in any cabinet or rack with vertical mounting rails. Option of having #1 start at the top or bottom.

Hardware Kits

Hardware kits are included with every enclosure, wall mount, telco rack, and table top. They can also be ordered separately if additional desired.



Anchor Kits

Anchor kits are used to secure an enclosure to a raised data center floor or to a concrete floor when required.

Picture shown is specifically designed for raised data center floor.



Reducer Brackets

Reducer Brackets are used in wider enclosures that have 23" or 24" standard EIA mounting patterns in order to reduce the 23" or 24" mounting pattern to the standard 19" EIA pattern when installing a piece of equipment that requires the 19" mounting.



Joining Kits

Joining kits are used to securely attach enclosures that are in a row to each other which makes the enclosures more stable and assists in making the row of enclosures straight and orderly. The joining kits come in two variations, Internal and External.



Engineering Design Services



CUSTOM is the new STANDARD

To serve our customers better, Martin Enclosures offers custom engineering design services to meet and exceed your needs and expectations. When off the shelf and modified standard don't fit the requirements, we work closely with you to engineer and design a custom solution.

With today's ever changing data center landscape, it is imperative that they have a partner that can support their infrastructure through these evolving times. Our core expertise lies in providing custom solutions tailored to the specific needs of our clients, and we believe this flexibility could be a valuable resource for Intel as you continue to navigate the evolving data center landscape. Below are the general steps that we take.

- Defining the problem
- Specifying requirements
- Creating potential solutions
- Choosing the best solution
- Designing and building a prototype
- Testing the prototype
- Production planning
- Production

Additional Services

We strive to satisfy the needs of our customers, no matter how specific. Martin Enclosures offers a wide variety of services to accommodate every customer requirement.

Private Labeling - For customers who wish to package their products in Martin Enclosures and resell the complete solution under their own brand.

Silk Screening - Designations on panels, power strips, or customers' logos on a cabinet or enclosure.

Rack Integration - Martin can install the equipment when customers do not have qualified personnel to do the job properly.

Local Delivery (Our truck) - When feasible, we prefer to deliver personally with white glove service to eliminate the possibility of damage by common carrier.

Shipping Crates - Crates are designed and built in house for the particular size of enclosure that goes into it in order to provide better protection against shipping vibration and damage. Shipping crates come with a door that doubles as a ramp to roll the cabinet in and out of the crate. Crates have cushion foam on the interior to support and cushion cabinet during transit. Crates can either have a standard wood pallet base or a cushioned pallet to absorb more of the vibration during transit. Shipping crates are designed to be reused by the customer 2-3 times. Heavy duty crates can be made for extreme cases such as reusing many times.



Martin is **QUALITY**



Martin Enclosures is a family owned U.S. based manufacturer that has been supporting the IT world for over 25 years. Our dedicated team is focused on team work and strives to give our customers unparalleled products.

Quality has always been a top priority here at Martin and is what sets us apart from the competition. Martin Enclosures is proudly ISO 9001:2015 certified and will remain committed to providing our customers with the highest quality products as we continue to grow.



Martin Enclosures Facility



Martin Enclosures' 60,000 sqft high performance manufacturing facility is located in Seabrook, NH, just 1 hour north of Boston. Martin proudly performs all manufacturing processes in house to reduce the reliability on third party vendors.

Our in house manufacturing capabilities include a CNC machining center, multiple conveyor powder coating lines, rack and cabinet assembly department, electrical assembly department, steel and aluminum welding departments, and a precision Amada punching and forming center.



Let Martin Design Your Next Rack Solution

Martin International Enclosures has accumulated a wealth of experience in maintaining first-rate manufacturing and exceptional customer service.

Call or email us today to speak with a sales specialist who can assist you in taking the next steps with Martin Enclosures.



Call Today to Design
Your Enclosure Solution
603.474.2626



Email Us
With Any Questions
sales@martinenclosures.com



Visit Our Website
to Explore Our Products
www.martinenclosures.com



martin

INTERNATIONAL ENCLOSURES

14 Woodworkers Way Seabrook, NH 03874

Tel: (603) 474-2626 Fax: (603) 474-1881

www.martinenclosures.com

Email: sales@martinenclosures.com