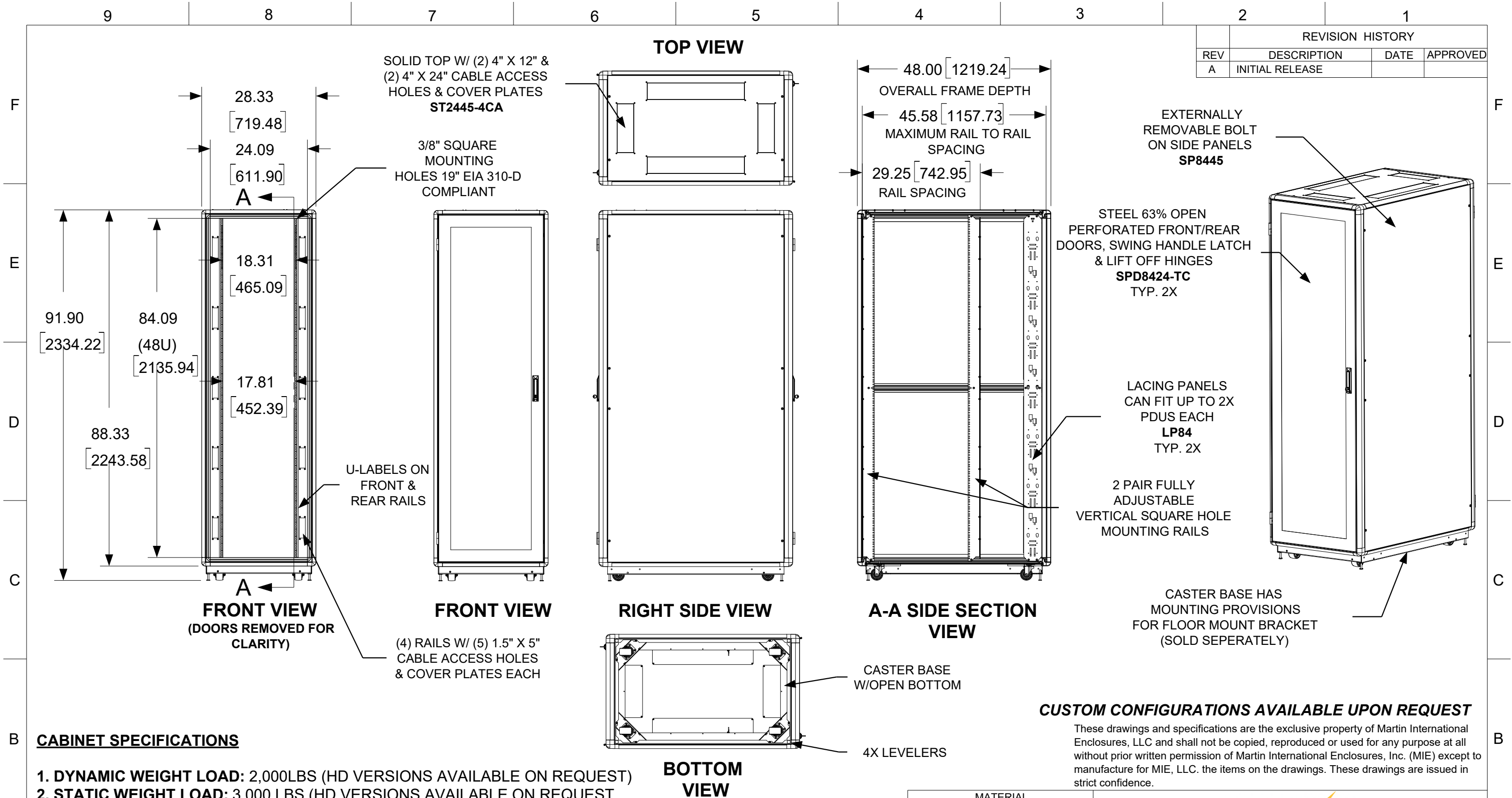


	REVISION HISTORY		
REV	DESCRIPTION	DATE	APPROVED
A	INITIAL RELEASE		



CABINET SPECIFICATIONS

- 1. DYNAMIC WEIGHT LOAD:** 2,000LBS (HD VERSIONS AVAILABLE ON REQUEST)
- 2. STATIC WEIGHT LOAD:** 3,000 LBS (HD VERSIONS AVAILABLE ON REQUEST)
- 3. CABINET DIMENSIONS:** 91.90"H X 24.00"W X 48.00"D
- 4. CABINET WEIGHT:** 472 LBS.
- 5. SHIPPING WEIGHT & DIMENSIONS:** 507 LBS., 99"H X 33"W X 55"D
- 6. FINISH:** POWDERCOAT (STANDARD & CUSTOM COLORS AVAILABLE)
- 7. MATERIAL:** FRAME - 6063 ALUMINUM EXTRUSION, PANELS - 18GA GALV., DOORS - 16GA GALV., BASE/RAILS - 12GA GALV.
- 8. HARDWARE:** PACK OF 40 EACH - M6 X 20MM PHILLIPS PAN HEAD SCREWS, M6 CAGE NUTS, M6 FLAT POLYCARBONATE WASHERS



PROGRAM#	DATE	DRAWN BY: JQ	SIZE B	DATE 9/19/25	PART # MET842445	REV A
SETBACK=	DATE	APPROVED BY:	SCALE = 1/23	FINISH: A/R	SHEET 1 OF 1	