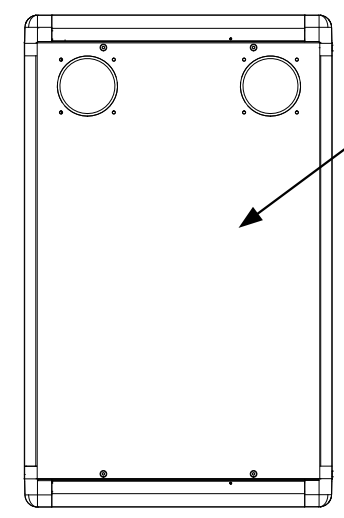


9 8 7 6 5 4 3 2 1

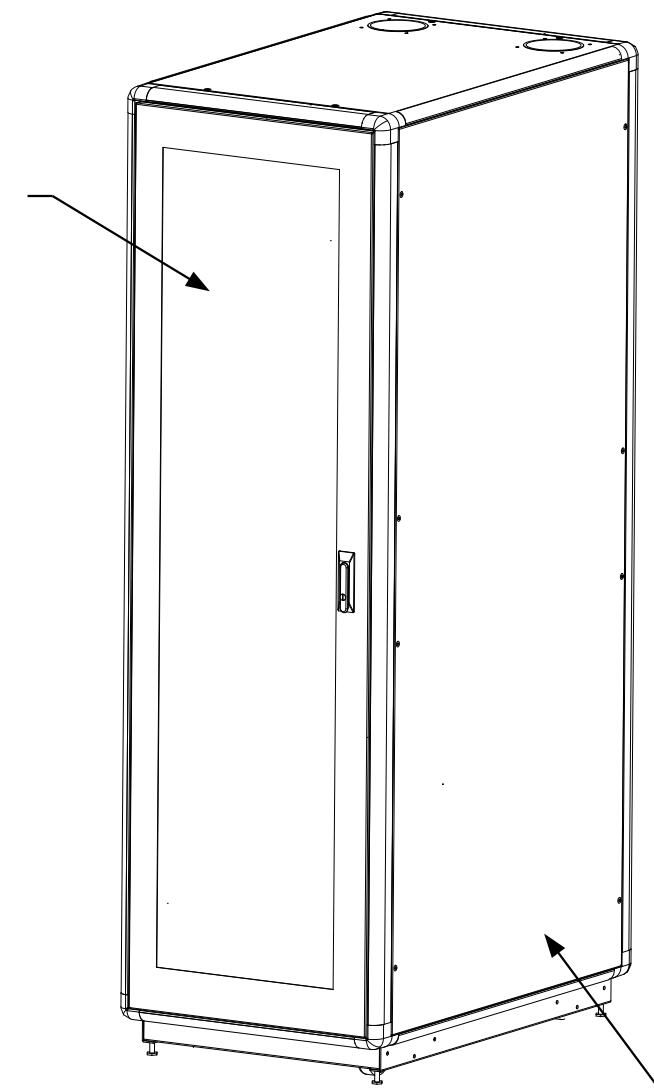
These drawings and specifications are the exclusive property of Martin International Enclosures, Inc. and shall not be copied, reproduced or used for any purpose at all without prior written permission of Martin International Enclosures, Inc. (MIE) except to manufacture for MIE, Inc. the items on the drawings. These drawings are issued in strict confidence.

REVISION HISTORY			
REV	DESCRIPTION	DATE	APPROVED



SOLID TOP PANEL WITH (2) CABLE ACCESS HOLE
ST2036-2HC

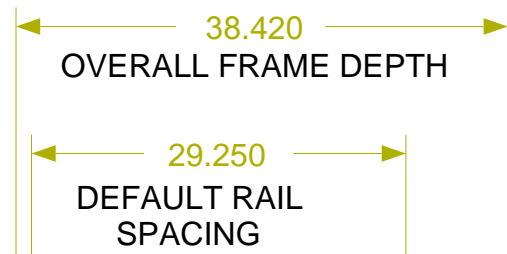
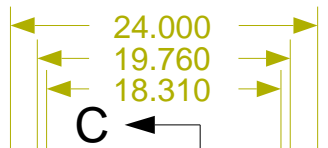
NOTES:
- MAXIMUM RAIL TO RAIL SPACING IS 36.000 WHEN LACING PANEL IS REMOVED.



STEEL PERFORATED DOOR
SPD7720

EXTERNALLY REMOVEABLE SIDE PANELS
SP7736

** SHOWN WITH FRONT DOOR REMOVED



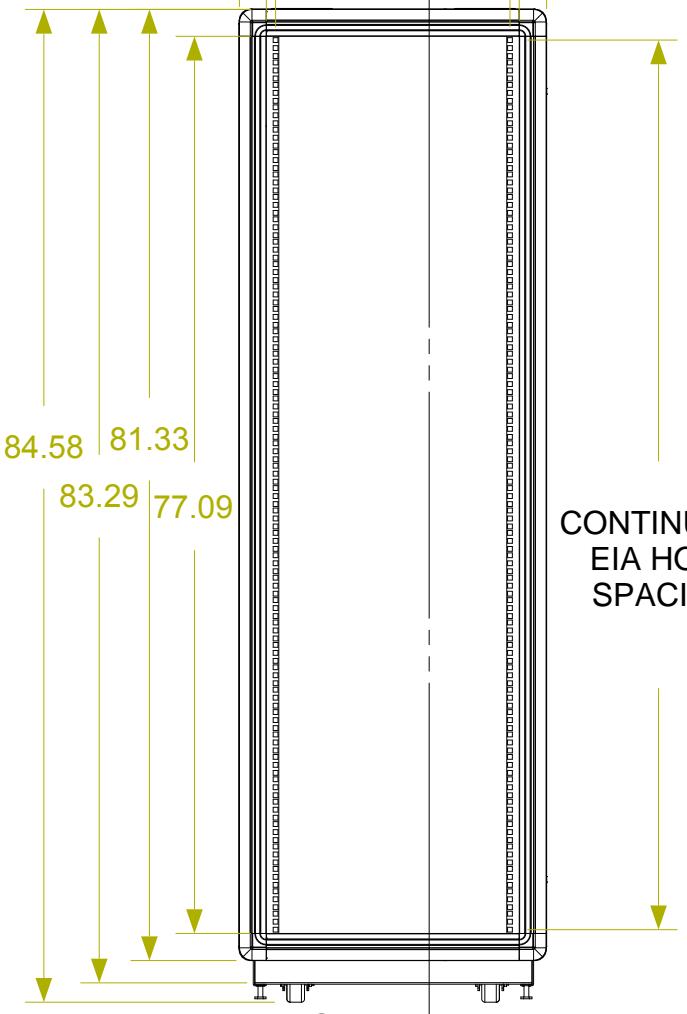
ALUMINUM EXTRUDED FRAME
772036

REAR VIEW

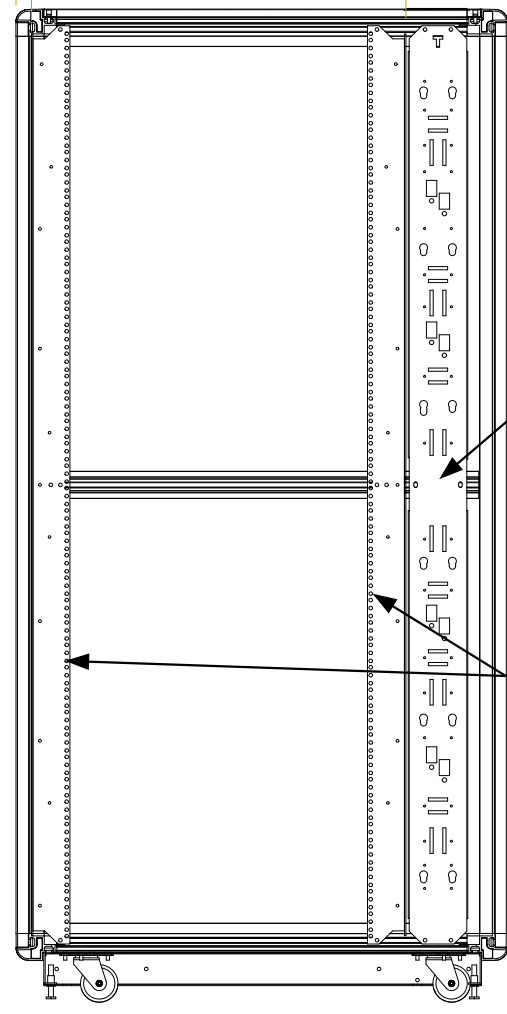
(1) LACING PANEL
LP77

FULLY ADJUSTABLE VERTICAL MOUNTING RAILS (2) PAIR

STEEL PERFORATED DOOR
SPD7720



FRONT VIEW



SIDE SECTION VIEW



PART NAME
44U X 36" DEEP; 19" RACKMOUNT EXTRUDED ALUMINUM FRAME

DRAWN BY: SMM

APPROVED BY:

SIZE B	DATE 10/21/16	PART # MSR772036	REV
-----------	------------------	---------------------	-----

FINISH: A/R SHEET 1 OF 1

9 8 7 6 5 4 3 2 1